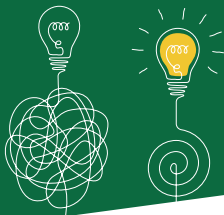


You are not alone.

Support for
students feeling
overwhelmed



A registered social worker who provides same-day, holistic, and comprehensive support for students in the College of Pharmacy and Nutrition. They can provide support if you are:

- in distress, in crisis, feeling overwhelmed, or stuck and unsure what to do next,
- experiencing a complicated or complex problem,
- needing support with difficult academic or non-academic related conversations and processes,
- experiencing difficulties, challenges or barriers in your personal or academic lives, or
- affected by sexual and/or gender based violence

Support includes listening, coaching, wellness advising, crisis intervention, problem-solving, resource and policy navigation and referrals.

Stephanie Koroluk (she/her)

Student Support and Outreach Coordinator
Office 2A10.16, A-Wing, Health Sciences
306-966-3268

Monday to Friday, 8:30 am – 4:30 pm



Scan to book an
appointment



UNIVERSITY OF SASKATCHEWAN

College of Pharmacy
and Nutrition

PHARMACY-NUTRITION.USASK.CA